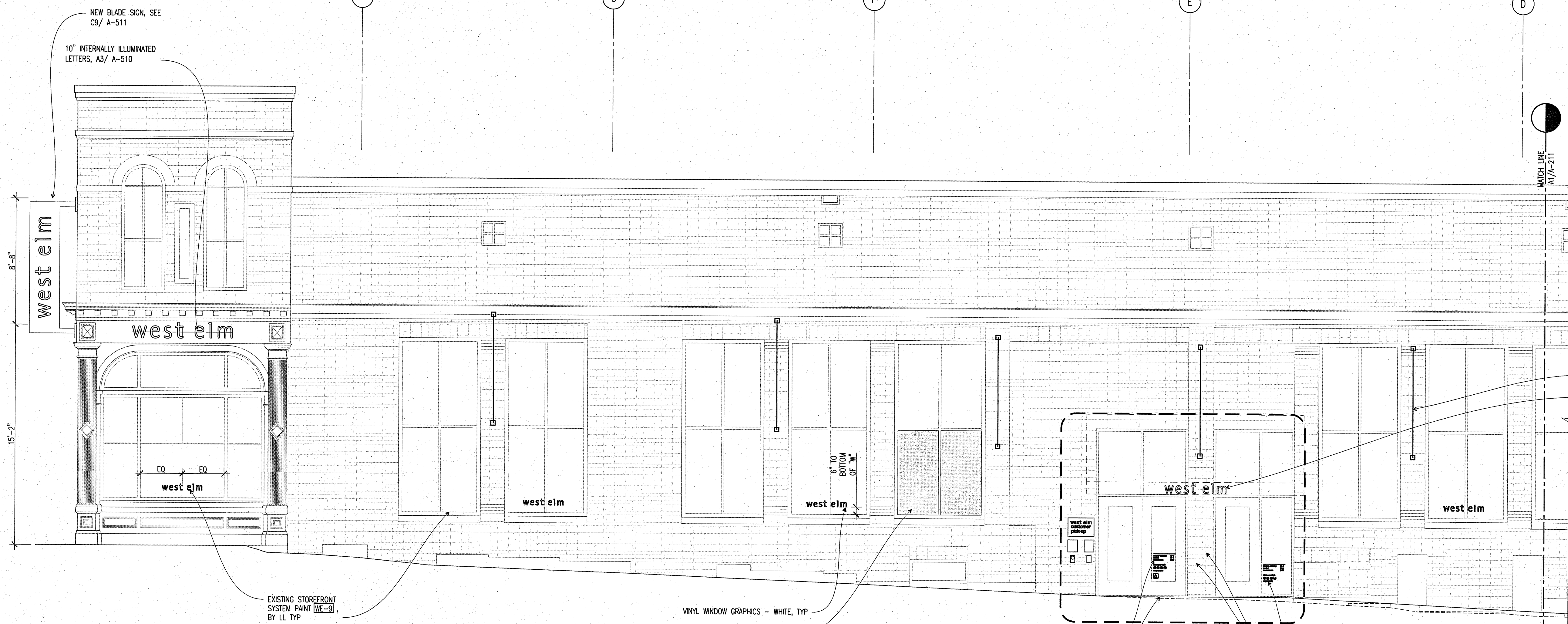
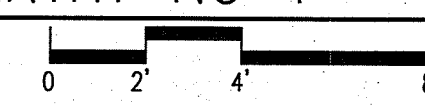
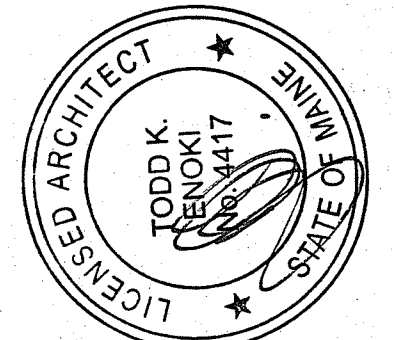


**D1** PARTIAL STOREFRONT PLAN - ENTRY NO 1  
 1/4"=1'-0"



**A1** ENLARGED EXTERIOR ELEVATION - ENTRY NO 1  
 1/4"=1'-0"



**CALLISONRTKL**<sup>TM</sup>  
 A DESIGN CONSULTANCY OF ARCADIS  
**CALLISONRTKL, INC.**  
 www.callisonrtkl.com

**west elm**  
 Downtown Portland  
 164 Middle Street  
 Portland, ME 04101  
 PROJECT #006-160335-00

ISSUED / REVISED	DATE
PRELIMINARY SET	09/08/16
LL COORDINATION SET	11/08/16
LL/PERMIT SET	11/21/16

STOREFRONT ELEVATION

**A-211**

OWNER:  
**WILLIAMS-SONOMA, INC.**  
 3250 Van Ness Avenue  
 San Francisco, CA 94109  
 T 415 616 8602  
 F 415 439 8164  
 www.williams-sonoma.com